



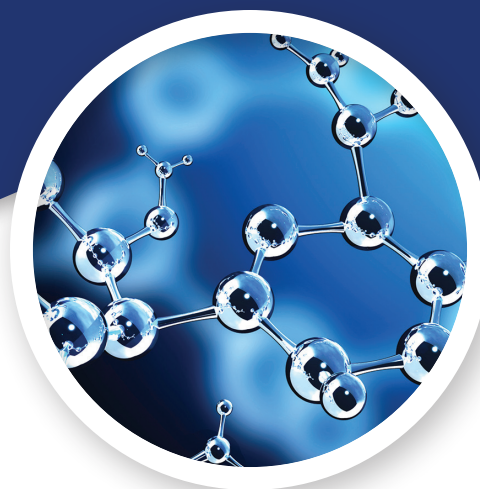
CIL

Cambridge Isotope Laboratories, Inc.
isotope.com

Eurisotop
 A CAMBRIDGE ISOTOPE LABORATORIES COMPANY

RESEARCH PRODUCTS

Stable Isotope-Labeled Basic Starting Materials and Synthetic Intermediates



Cambridge Isotope Laboratories, Inc. (CIL) offers over 15,000 stable isotope-labeled products for your synthetic applications, including the manufacturing of APIs. Many labeling patterns are available for common starting materials. For more than 35 years, CIL has offered:

- Expertise and quality service from initial quote request through delivery
- Flexibility of scale for custom and catalog products from milligram to multi-kilogram quantities
- cGMP suite for manufacturing clinical trial grade materials (CTM)

Catalog No.	Description
CLM-173	Acetaldehyde (1,2- ¹³ C ₂ , 99%)
DLM-112	Acetaldehyde-d ₄ (D, 99%)
CLM-2483	Acetanilide (ring- ¹³ C ₆ , 99%)
CLM-105	Acetic acid (1,2- ¹² C ₂ , 99.95%)
DLM-12*	Acetic acid-d ₄
DLM-1556	Acetic acid-d (D, 98%)
CLM-1160	Acetic anhydride (2,2'- ¹³ C ₂ , 99%)
CLM-1161	Acetic anhydride (1,1',2,2'- ¹³ C ₄ , 99%)
DLM-1162	Acetic anhydride-d ₆ (D, 98%)
CLM-1334	Acetone (¹³ C ₃ , 99%)
CLM-1306	Acetone (1,3- ¹³ C ₂ , 99%)
CLM-245	Acetone (2- ¹³ C, 99%)
DLM-9*	Acetone-d ₆
CLM-1242	Acetonitrile (1,2- ¹³ C ₂ , 99%)
CLM-1260	Acetonitrile (1- ¹³ C, 99%)
CLM-1588	Acetonitrile (2- ¹³ C, 99%)
NLM-175	Acetonitrile (¹⁵ N, 98%+)
CDLM-6208	Acetyl chloride (¹³ C ₂ , 99%; D ₃ , 98%)
CLM-246	Acetyl chloride (1- ¹³ C, 99%)
CLM-703	Acetyl chloride (2- ¹³ C, 99%)
CLM-704	Acetyl chloride (1,2- ¹³ C ₂ , 99%)
DLM-247	Acetyl chloride-d ₃ (D, 98%)
DLM-855	Acrylic-2,3,3-d ₃ acid (D, 98%) (+ 0.1% 4-methoxyphenol) <5% H ₂ O
NLM-177	Ammonium acetate (¹⁵ N, 98%+)

Catalog No.	Description
DLM-710*	Ammonium deuterioxide-d ₅ (D, 99%) ~25% sol in D ₂ O
NLM-1320	Ammonium hydroxide (¹⁵ N, 98%+) 3.3 N in H ₂ O
NLM-3929	Ammonium hydroxide (¹⁵ N, 98%+) 6 N in H ₂ O
CLM-714	Aniline (¹³ C _{6r} , 99%)
CNLM-4805	Aniline (¹³ C _{6r} , 98%+; ¹⁵ N, 98%+)
DLM-862	Aniline-ring-d ₅ (D, 98%)
NLM-1314	Aniline (¹⁵ N, 98%+)
CLM-1337	Anisole (ring- ¹³ C _{6r} , 99%)
CLM-466	Barium carbonate (¹³ C, 98%+)
CLM-180	Benzaldehyde (ring- ¹³ C _{6r} , 99%) + 0.1% hydroquinone
CLM-182	Benzene (¹³ C _{6r} , 99%)
DLM-1*	Benzene-d ₆
CLM-1813	Benzoic acid (ring- ¹³ C _{6r} , 99%)
CLM-657	Benzoic acid (carboxyl- ¹³ C, 99%)
CLM-2298	Benzyl alcohol (ring- ¹³ C _{6r} , 99%)
DLM-494	Biphenyl-d ₁₀ (D, 98%)
DLM-1945	Bis(2-Chloroethoxy)-d ₈ methane (D, 98%)
DLM-1315	Borane-d ₃ (D, 98%) (1 molar in THF) + 0.005M NaBD ₄
DLM-4747	Borane-d ₃ methylsulfide complex (D, 99%)
CLM-1339	Bromoacetic acid (1,2- ¹³ C ₂ , 99%)
CLM-723	Bromoacetic acid (1- ¹³ C, 99%)
CLM-724	Bromoacetic acid (2- ¹³ C, 99%)
CLM-871	Bromobenzene (¹³ C _{6r} , 99%)
DLM-398	Bromobenzene-d ₅ (D, 99%)

*Different grades are available with varying specifications. Please inquire for details.
Chemical purity (CP) is 98% or greater, unless otherwise indicated.

Continued ►

Catalog No.	Description
DLM-874	Bromoethane-d ₅ (D, 98%)
DLM-181	1,4-Butanediol-2,2,3,3-d ₄ (D, 98%)
DLM-1664	<i>t</i> -Butanol-d ₁₀ (D, 98%)
DM-1116	<i>t</i> -Butyl chloride-d ₉ (D, 98%)
CLM-730	Carbon disulfide (¹³ C, 97-99%)
CLM-185*	Carbon dioxide (¹³ C)
CLM-189*	Carbon monoxide (¹³ C)
HPG-040	Carbon monoxide (high purity) CP 99.99%
HPG-045	Carbon monoxide (high purity) CP 99.995%
CLM-1829	Chlorobenzene (¹³ C ₆ , 99%)
DLM-263	Chlorobenzene-d ₅ (D, 99%)
DLM-7*	Chloroform-d
DLM-337	Chloromethane-d ₃ (D, 99%)
CNLM-7289	Cyanamide (¹³ C, 99%; ¹⁵ N ₂ , 98%) stabilized with < 0.1% acetic acid
DLM-1560	Cyclohexanone-d ₁₀ (D, 98%)
DLM-2781	Cyclopentyl bromide-d ₉ (D, 98%)
DLM-1003*	Deuterium (D, 99.96%) <400 ppm HD
DLM-408*	Deuterium
DLM-458*	Deuterium chloride (D, 99%)
DLM-3*	Deuterium chloride (D, 99.5%) DCI 35% w/w solution in D ₂ O
DLM-2	Deuterium chloride (D, 99.5%) DCI 20% w/w solution in D ₂ O
DLM-4*	Deuterium oxide
CLM-1340	1,4-Dibromobenzene (¹³ C ₆ , 99%)
DLM-195	1,2-Dibromoethane-d ₄ (D, 99%)
DLM-158	1,2-Dichlorobenzene-d ₄ (D, 99%)
CLM-1585	Diethyl acetamidomalonate (2- ¹³ C, 99%)
CNLM-6677	Diethyl acetamidomalonate (1,2,3- ¹³ C ₃ , 99%; ¹⁵ N, 98%)
NLM-3421	Diethyl acetamidomalonate (¹⁵ N, 98%)
CLM-4324	Diethyl acetylenedicarboxylate (1,2,3,4- ¹³ C ₄ , 99%)
CLM-3603	Diethyl malonate (1,2,3- ¹³ C ₃ , 99%)
CLM-495	Diethyl malonate (2- ¹³ C, 99%)
CLM-521	Diethyl malonate (1,3- ¹³ C ₂ , 99%)
CDLM-7163	Diethyl succinate (1,2,3,4- ¹³ C ₄ , 99%; 2,2,3,3-D ₄ , 98%)
CLM-1620	Diethyl succinate (1,2,3,4- ¹³ C ₄ , 99%)
DLM-265	Dimethyl-d ₆ -amine-HCl (D, 98%)
DLM-3903	Dimethyl carbonate-d ₆ (D, 99%)
CLM-266	Dimethyl sulfate (¹³ C ₂ , 99%)
DLM-196	Dimethyl sulfate-d ₆ (D, 98%)
DLM-10*	Dimethyl sulfoxide-d ₆
DLM-25	<i>N,N</i> -Dimethylformamide-d ₇ (D, 99.5%)
DLM-1670	<i>N,N</i> -Dimethylformamide (formyl-D, 98-99%)
DLM-16*	Ethanol-OD (D, 99%)
DLM-31*	Ethanol-d ₆ (D, 99%)
DLM-9660	<i>N</i> -Ethylaniline-d ₁₀ (D, 98%)
DLM-9626	<i>N</i> -Ethyl-d ₅ -aniline (D, 98%)
DLM-347	Ethylene-d ₄ (D, 98%)
CLM-1121	Ethyl acetate (2- ¹³ C, 99%)
CLM-1122	Ethyl acetate (1,2- ¹³ C ₂ , 99%)
CLM-131	Ethyl acetate (1- ¹³ C, 99%)
CLM-3297	Ethyl acetoacetate (1,2,3,4- ¹³ C ₄ , 99%)

Catalog No.	Description
CLM-1009	Ethyl bromoacetate (1- ¹³ C, 99%)
CLM-1010	Ethyl bromoacetate (2- ¹³ C, 99%)
CLM-1011	Ethyl bromoacetate (1,2- ¹³ C ₂ , 99%)
CLM-4326	Fluorobenzene (¹³ C ₆ , 99%)
CLM-806	Formaldehyde (¹³ C, 99%) ~20% w/w in H ₂ O
DLM-805	Formaldehyde-d ₂ (D, 98%) ~20% w/w in D ₂ O
CDLM-4599	Formaldehyde (¹³ C, 99%; D ₂ , 98%) 20% w/w in D ₂ O
CLM-2032	Formamide (¹³ C, 99%)
DLM-743	Formic acid (formyl-D, 98%) <5% H ₂ O
DLM-286	Formic acid-d ₂ (D, 98%) <5% D ₂ O
CDLM-6062	Fumaric acid (1- ¹³ C, 99%; 2,3-D ₂ , 99%)
CLM-4454	Fumaric acid (1,4- ¹³ C ₂ , 99%)
DLM-423	<i>n</i> -Heptane-d ₁₆ (D, 98%)
NLM-352	Hydrazine sulfate (¹⁵ N ₂ , 98%+)
NLM-426	Hydroxylamine-HCl (¹⁵ N, 98%+)
CLM-1892	Iodoethane (2- ¹³ C, 99%) + copper wire
CLM-741	Iodoethane (1,2- ¹³ C ₂ , 99%) + copper wire
DLM-272	Iodoethane-d ₅ (D, 99%) + copper wire
DLM-1023	Iodoethane-1,1-d ₂ (D, 98%) + copper wire
DLM-1024	Iodoethane-2,2,2-d ₃ (D, 98%) + copper wire
CLM-4714	Isopropanol (2- ¹³ C, 99%)
DLM-44	Isopropanol-d ₈ (D, 99%)
DLM-6201	α -Ketoglutaric acid-3,3,4,4-d ₄ (D, 98%) CP 90%
DLM-356	Lithium aluminum deuteride (D ₄ , 98%)
DLM-1945	<i>bis</i> (2-Chloroethoxy)-d ₈ methane (D, 98%)
DLM-1981	Methanesulfonic acid-d ₄ (D, 97-98%)
CLM-359	Methanol (¹³ C, 99%)
DLM-15	Methanol-OD (D, 99%)
DLM-24*	Methanol-d ₄
CDLM-688	Methanol (¹³ C, 99%; D ₄ , 99%)
CLM-360	Methylamine-HCl (¹³ C, 99%)
DLM-1500*	Methyl-d ₃ -amine (D, 98%)
DLM-289	Methyl-d ₃ -amine-HCl (D, 98%)
DLM-23	Methylene chloride-d ₂ (D, 99.8%)
DLM-9707	Methyl-d ₃ methanesulfonate (D, 98%)
DLM-651	Methyl formate (formyl-D, 99%)
CDLM-1037	Methyl iodide (¹² C, 99.95%; D ₃ , 99.5%) + copper wire
CDLM-1537	Methyl iodide (¹³ C, 99%; D ₃ , 99%) + copper wire
CDLM-6015	Methyl iodide (¹³ C, 99%; D ₂ , 98%) + copper wire
DLM-362	Methyl iodide (D ₃ , 99.5%) + copper wire
CLM-287	Methyl iodide (¹³ C, 99%) + copper wire
DLM-3484	Morpholine-2,2,3,3,5,5,6,6-d ₈ (D, 98%)
CLM-675	Nitrobenzene (¹³ C ₆ , 99%)
NLM-1042	Nitrobenzene (¹⁵ N, 98%+)
CLM-1043	Nitromethane (¹³ C, 99%)
NLM-600	Nitromethane (¹⁵ N, 98%+)
DLM-295	2-Nitrophenol-ring-d ₄ (D, 98%)
DLM-296	4-Nitrophenol-ring-d ₄ (D, 98%)
DLM-619	Octanoic acid-d ₁₅ (D, 98%)
CLM-2002	Oxalic acid (1,2- ¹³ C ₂ , 99%)
CDLM-2702	Paraformaldehyde (¹³ C, 99%; D ₂ , 98%)
CLM-229	Paraformaldehyde (¹³ C, 99%)
DLM-300	Paraformaldehyde-d ₂ (D, 99%)

*Different grades are available with varying specifications. Please inquire for details.
Chemical purity (CP) is 98% or greater, unless otherwise indicated.

Catalog No.	Description
CLM-216	Phenol ($^{13}\text{C}_6$, 99%)
DLM-370	Phenol- d_6 (D, 98%)
OLM-1057	Phosphoric acid ($^{18}\text{O}_4$, 96%) 80-85% in ^{18}O water
DLM-788	Phthalic anhydride- d_4 (D, 98%)
NLM-6081	Phthalimide (^{15}N , 98%+)
DLM-9813	Pivalic acid-trimethyl- d_9 (D, 98%)
CLM-297	Potassium cyanide (^{13}C , 99%)
CNLM-1961	Potassium cyanide (^{13}C , 99%; ^{15}N , 98%+)
NLM-111	Potassium cyanide (^{15}N , 98%+)
NLM-367	Potassium phthalimide (^{15}N , 98%+)
DLM-3078*	<i>N</i> -Propanol- d_7 (D, 98%)
DLM-9662	Pyrrolidine-2,2,3,3,4,4,5,5- d_8 (D, 98%)
DLM-226	Sodium borodeuteride- d_4 (D, 99%) CP 95%
CLM-378	Sodium cyanide (^{13}C , 99%) CP 96%
NLM-3005	Sodium cyanide (^{15}N , 98%+) CP 96%
DLM-45*	Sodium deuterioxide (D, 99.5%) 40% in D_2O
CDLM-6203	Sodium formate (^{13}C , 99%; D, 98%)
CLM-583	Sodium formate (^{13}C , 99%)
DLM-1361	Sodium formate (D, 98%)

Catalog No.	Description
NLM-658	Sodium nitrite (^{15}N , 98%+)
CLM-2440	Sodium pyruvate ($^{13}\text{C}_3$, 99%)
DLM-8206	Sodium 2,2-dimethyl-2-silapentane-5-sulfonate- d_6 (DSS) (D, 98%)
CLM-1084	Succinic acid (1,4- $^{13}\text{C}_2$, 99%)
CLM-1199	Succinic acid (2,3- $^{13}\text{C}_2$, 99%)
CLM-2473	Succinic anhydride (1,2,3,4- $^{13}\text{C}_4$, 99%)
DLM-33*	Sulfuric acid- d_2 (D, 99%) 96-98% in D_2O
DLM-36	Tetrahydrofuran- d_8 (D, 99.5%)
DLM-2729	Tetramethylsilane- d_{12} (D, 98%)
CLM-6069	Toluene (ring- $^{13}\text{C}_6$, 99%)
DLM-5*	Toluene- d_8 (D, 99.5%)
CLM-4833	Triethyl orthoacetate (1,2- $^{13}\text{C}_2$, 99%)
CLM-3742	Triethyl orthoformate (formyl- ^{13}C , 99%)
DLM-46*	Trifluoroacetic acid-d
NLM-1697	Uric acid (1,3- $^{15}\text{N}_2$, 98%+)

Multiple sizes and quantity discounts are available; please inquire.

Please visit isotope.com/products → synthetic intermediates for a complete listing of isotope-labeled basic starting materials.



CIL products are distributed and sold worldwide via our extensive network.

To request a quotation or place an order, please contact Sales at
email: sales@isotope.com
telephone: 1.978.749.8000
1.800.322.1174 (North America only)

For our international customers

Please contact International Sales at
email: intlsales@isotope.com
telephone: +1.978.749.8000
CIL's distributor listing is available at: www.isotope.com

